

Office of the Defender General

Fiscal Year 2017 Budget

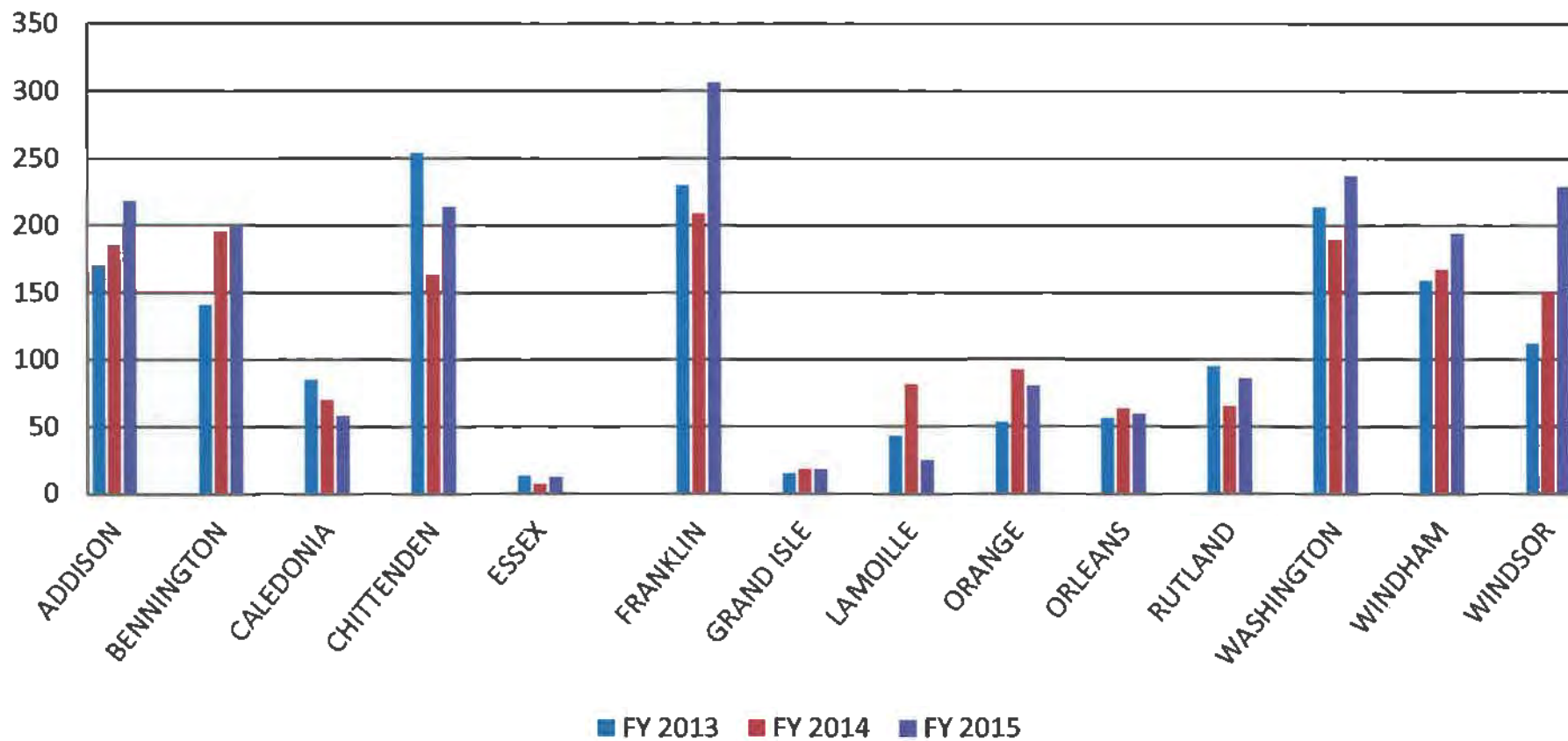
Caseload, Performance and Cost Per Case

January 2016

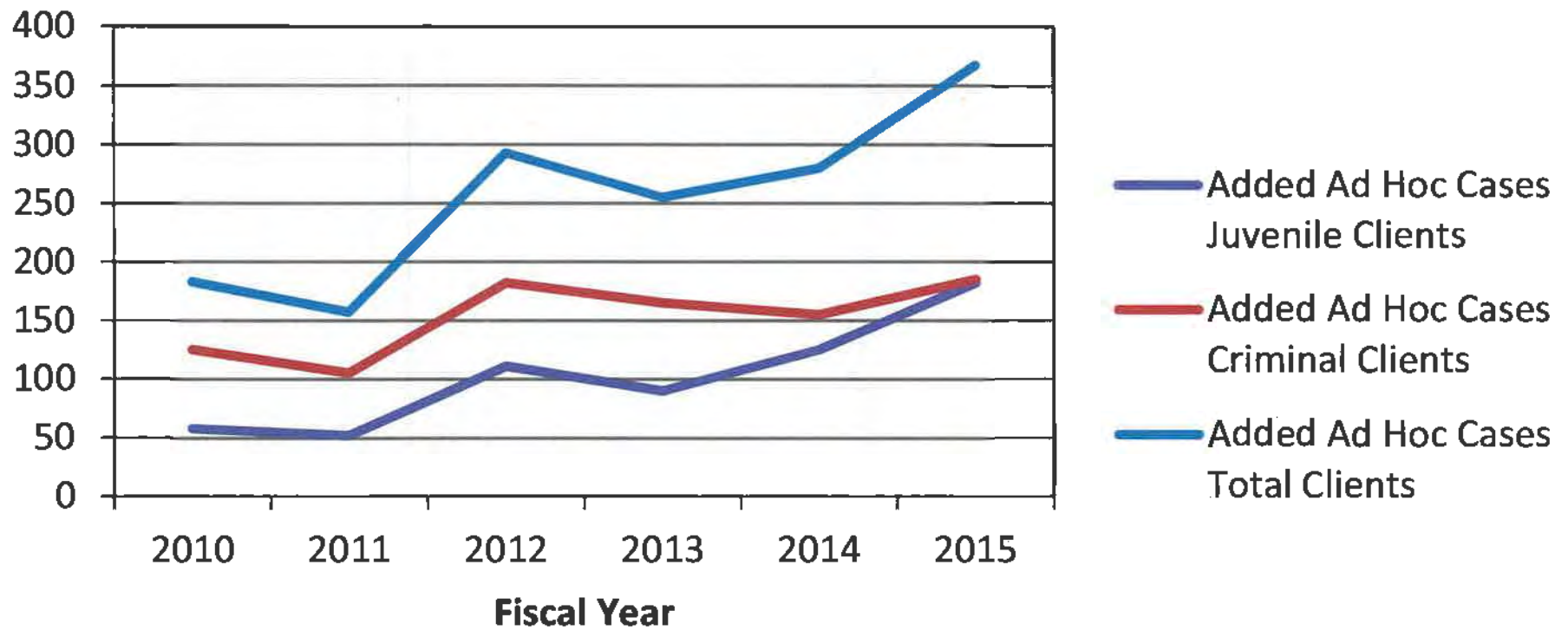
PUBLIC DEFENDER - TOTAL ADDED CASES - FY 2015

	FELONY		MISDEMEANOR		JUVENILE		OTHER		TOTAL		FY 2014		% INC/DEC	
	CHGS	CLTS	CHGS	CLTS	CHGS	CLTS	CHGS	CLTS	CHGS	CLTS	CHGS	CLTS	CHGS	CLTS
ADDISON	150	104	449	306	229	218	46	31	874	659	913	664	-4.3	-0.8
MARSH	0	0	0	0	229	218	0	0	229	218	202	185	13.4	17.8
STAFF OFFICE	150	104	449	306	0	0	46	31	645	441	711	479	-9.3	-7.9
BENNINGTON	425	211	1016	436	225	199	272	122	1938	968	2209	1087	-12.3	-10.9
CALEDONIA	132	87	390	210	71	58	161	44	754	399	771	425	-2.2	-6.1
CHITTENDEN	744	560	3152	1984	263	214	233	166	4392	2924	5125	3220	-14.3	-9.2
ESSEX	13	9	69	33	12	12	18	9	112	63	329	74	-66.0	-14.9
FRANKLIN/GRAND ISLE	356	267	1274	816	378	324	228	120	2236	1527	1879	1285	19.0	18.8
FRANKLIN	324	246	1172	745	360	306	211	107	2067	1404	1695	1168	21.9	20.2
GRAND ISLE	32	21	102	71	18	18	17	13	169	123	184	117	-8.2	5.1
LAMOILLE	100	48	327	197	31	25	61	48	519	318	340	237	52.6	34.2
ORANGE	74	57	323	160	107	80	91	74	595	371	526	365	13.1	1.6
ORLEANS	106	75	519	297	65	59	141	55	831	486	722	495	15.1	-1.8
RUTLAND	342	234	1140	666	96	86	225	83	1803	1069	2153	1122	-16.3	-4.7
WASHINGTON	166	109	700	407	296	237	95	70	1257	823	1116	706	12.6	16.6
WINDHAM	348	223	1341	586	220	194	260	125	2169	1128	2026	1114	7.1	1.3
WINDSOR	370	279	1300	684	256	229	419	175	2345	1367	2297	1303	2.1	4.9
TOTAL	3326	2263	12000	6782	2249	1935	2250	1122	19825	12102	20406	12097	-2.8	0.04
FY 2014	3540	2353	12253	6795	1929	1655	2786	1364	20508	12167				
% INC/DEC	-6.0	-3.8	-2.1	-0.2	16.6	16.9	-19.2	-17.7	-3.3	-0.53				

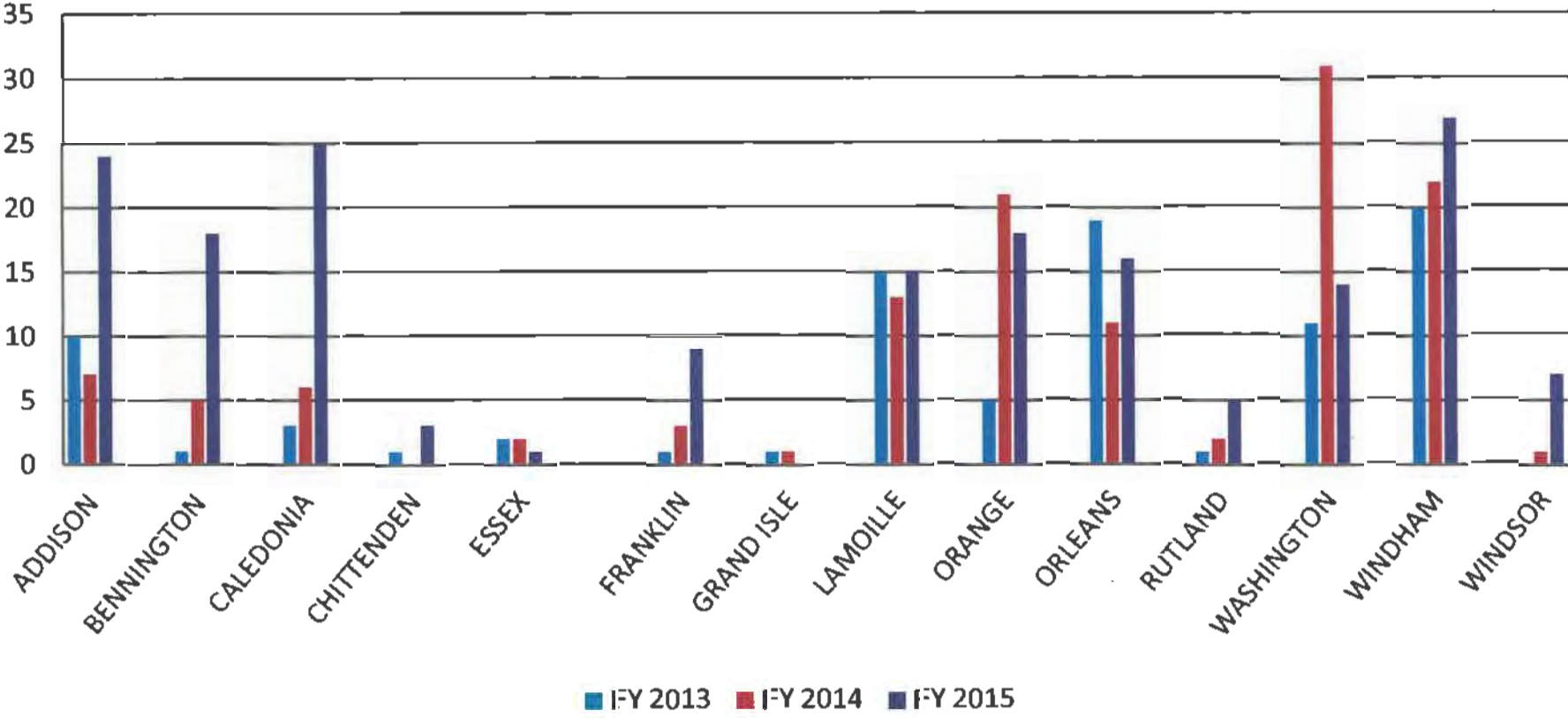
Office of the Defender General
Public Defense - Total Added Juvenile Cases



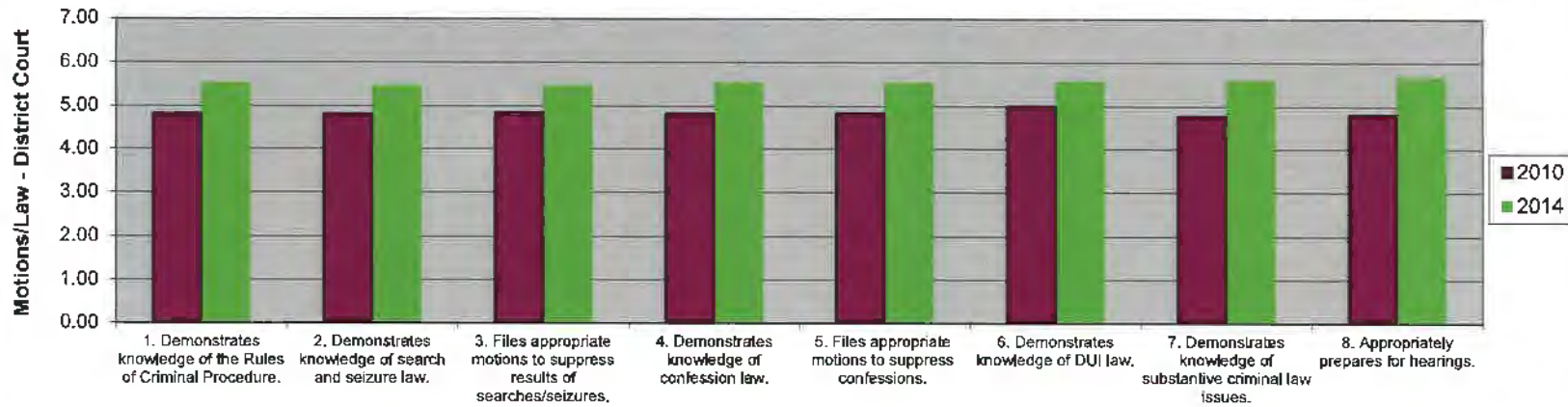
Office of the Defender General Added Ad Hoc Cases



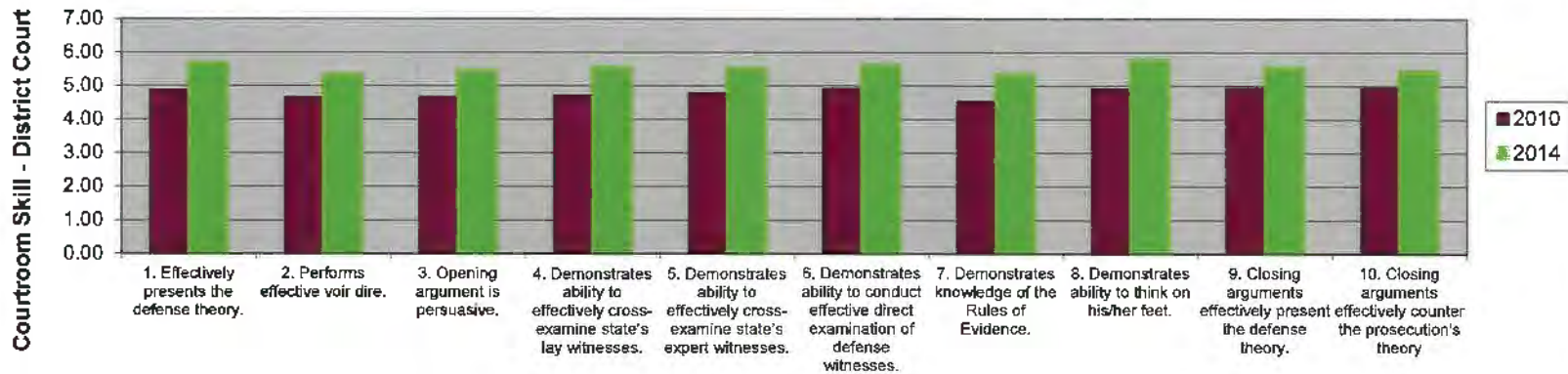
**Office of the Defender General
Ad Hoc - Total Added Juvenile Cases**



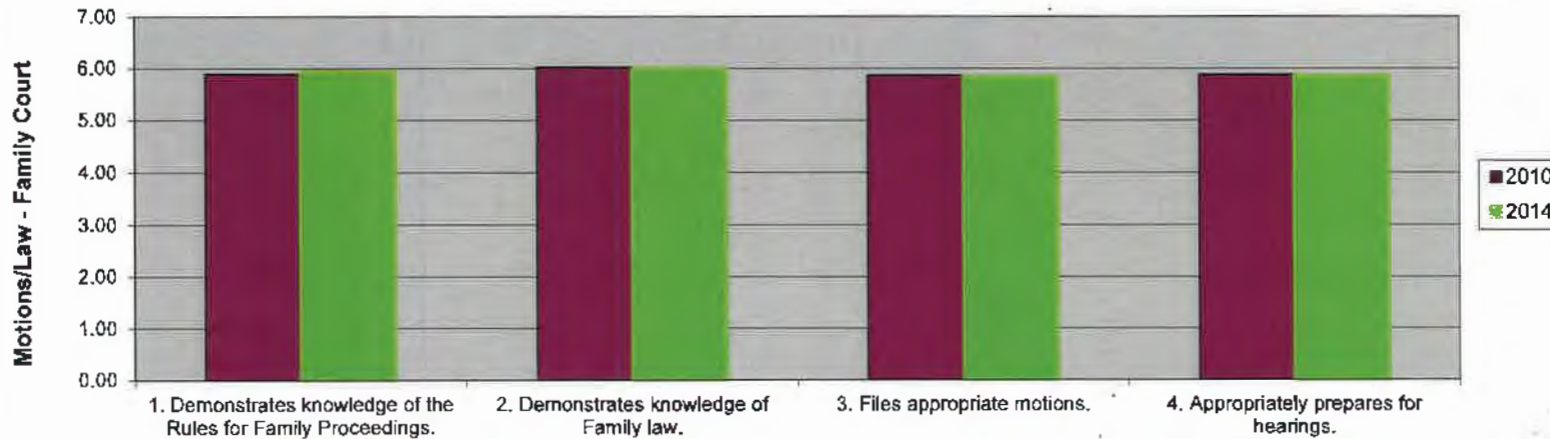
Office of the Defender General
Assigned Counsel Contractor Judicial Performance Evaluations: 2010 & 2014 Comparison



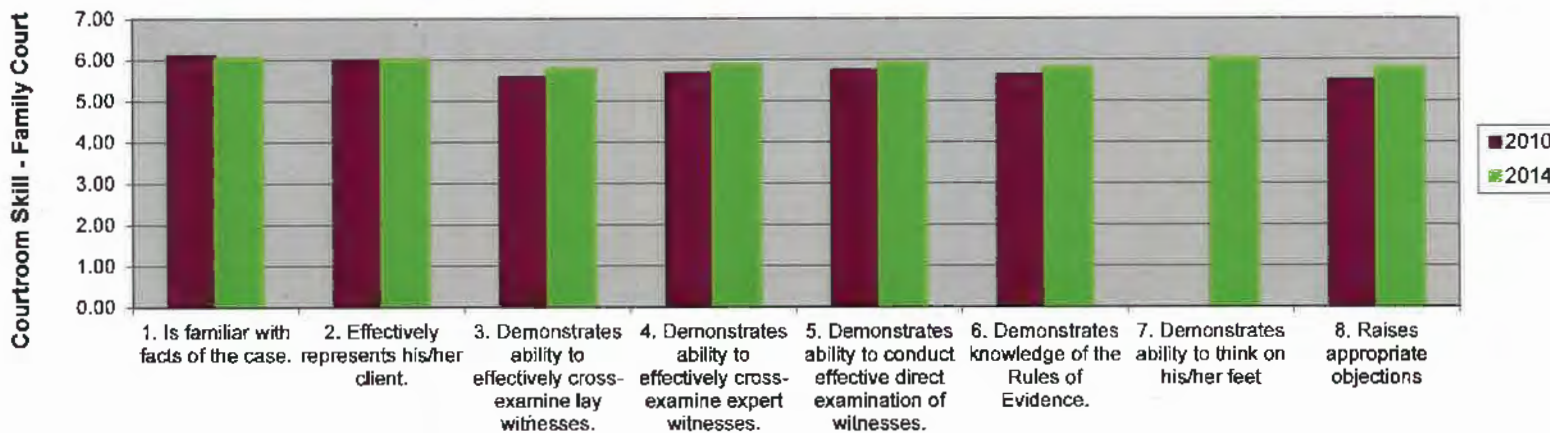
Office of the Defender General
Assigned Counsel Contractor Judicial Performance Evaluations: 2010 & 2014 Comparison



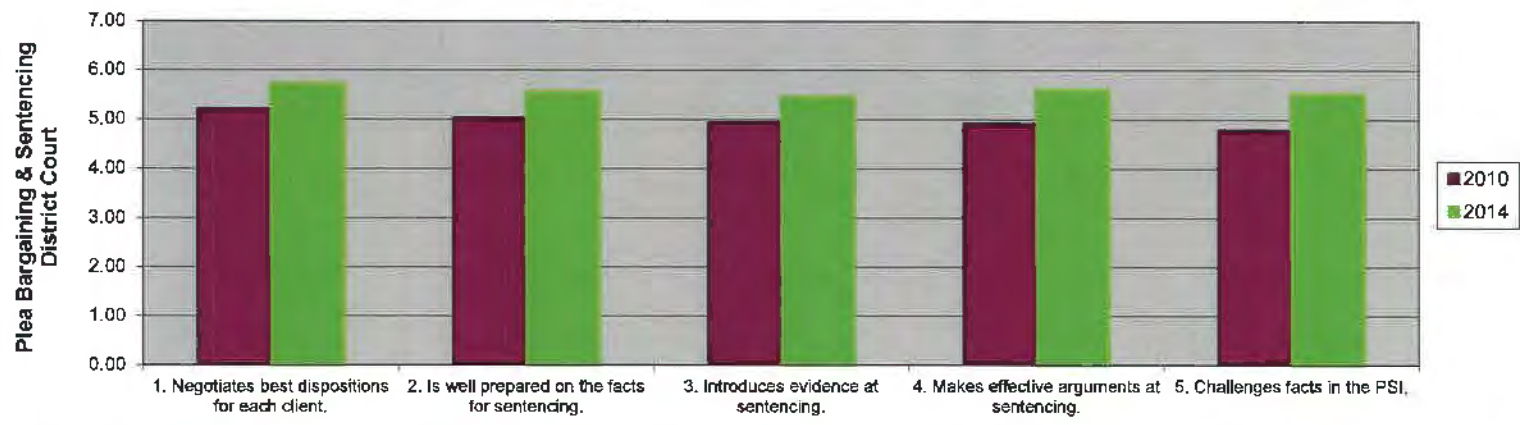
Office of the Defender General
Assigned Counsel Contractor Judicial Performance Evaluations: 2010 & 2014 Comparison



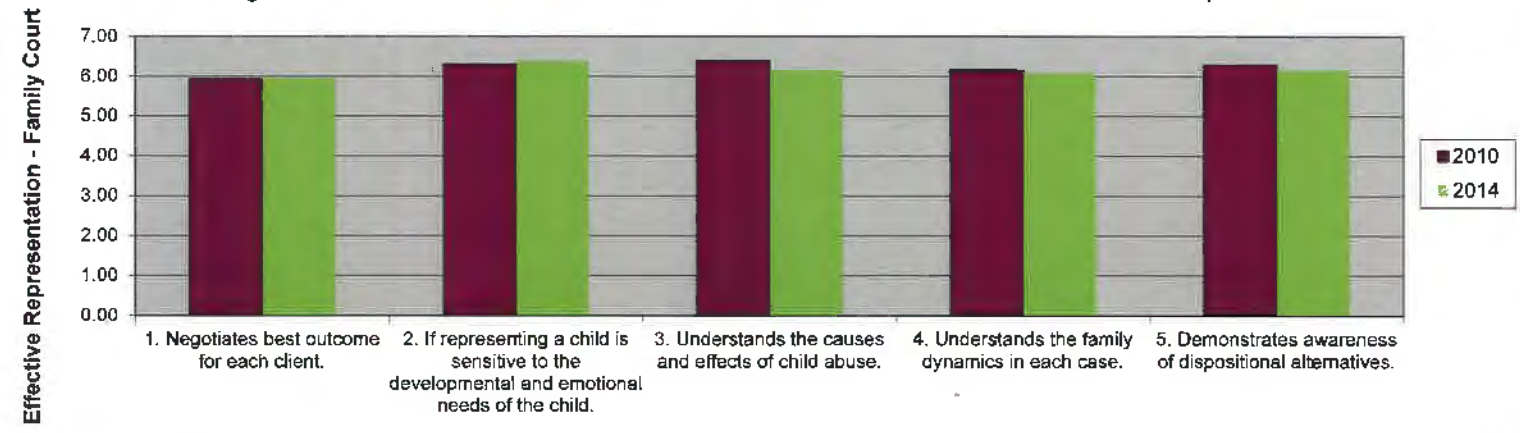
Office of the Defender General
Assigned Counsel Contractor Judicial Performance Evaluations: 2010 & 2014 Comparison



Office of the Defender General
Assigned Counsel Contractor Judicial Performance Evaluations: 2010 & 2014 Comparison



Office of the Defender General
Assigned Counsel Contractor Judicial Performance Evaluations: 2010 & 2014 Comparison



Office of the Defender General Blended Cost Per Case

